



# [LATTICE]

## SPOT TRACK LIGHT



### Description

LATTICE is an important component to perfect the track lighting system. LATTICE is responsible for illuminating the overall space, while other track spotlights illuminate key areas. Make the lighting more layered. They are the best partners. With LATTICE, Track lighting can fulfill all lighting needs. Make lighting design easier.

### Key Features

- > 3-Phase Track Spotlight
- > High efficiency, up to >100lm/w | 32w | RA:80
- > 26 degree beam angle | Low Glare | UGR<19
- > Warranty: 5 years | Lifud Driver
- > Input Voltage: 200-240Vac | PF>0.9 | THD<20%
- > 6 Powers dipswitch
- > FLICKER-FREE





Specification

Optical Parameters

CCT	3000K/4000K/5700K/6500K
CRI(Ra)	80
SDCM	6 (@3000K~5000K)
UGR	<19
Beam angle	26°
Body Color	White/Black
Material	Lens: AL-Reflector
	Structure: aluminum
	Driver: Lifud CC

Lifetime

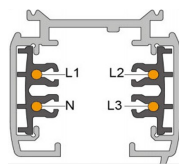
Warranty	5 years
L70B30	100,000+ hours
L80B10	80,000 hours
L90B10	50,000 hours
Driver failure rate	0.2% per 5000 hours
maintenance	Optical module sealed for life; no internal cleaning required

Electrical Parameters

Dimming	-
Input voltage	220-240Vac 50/60Hz
PF	0.95
PE	0.88
Over load/short Circuit	Protection
Driver Connection	Fixed
Hi-pot Test Range	SELV Isolated Driver, 3750Vdc/5mA/60S

Installation Information

"Average ambient temperature"	" Average ambient : +25 °c Operating temperature range: -10 to +40 °C"
Ceiling type	Track System 3-Phase/Circuit 4-Wire track
Light source	Non-replaceable LED module
IP	Total lamp IP20
IK	IK02



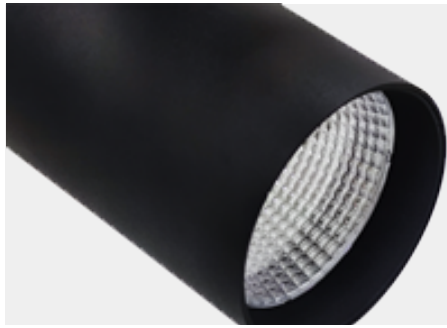
Model List

Model	Size(cm)	Power(w)	LPW(lm/w)	Lumen @CRI80 4000K 3000K	
TL-32W	ø82x115	32	90	2880	2650

Model	"LED Q'ty"	"LED Class"	Package CTN			Q'ty CTN 40HQ
			Ctn Size(mm)	G.W kg	N.W kg	
TL-32W	1	P190RA90	460x330x370	12.50	11.00	20 21000



HK office: 38-40 Au Pui Wan Street, Fo Tan, NT Hong Kong  
 China office: Building 3, No. 1, Mingcheng Road, Shijing Community, Shijing Street, Pingshan District, Shenzhen City, China  
 China Factory: 10th Floor, Building 16, No. 8, Galuo Sixth Road, Shuikou Street, Huicheng District, Huizhou City, China 516005  
 info@lumanlighting.com



Dimensional Drawing

